

# JiangXi Green System Manufacture and Trade Co., Ltd

## CONTACT US

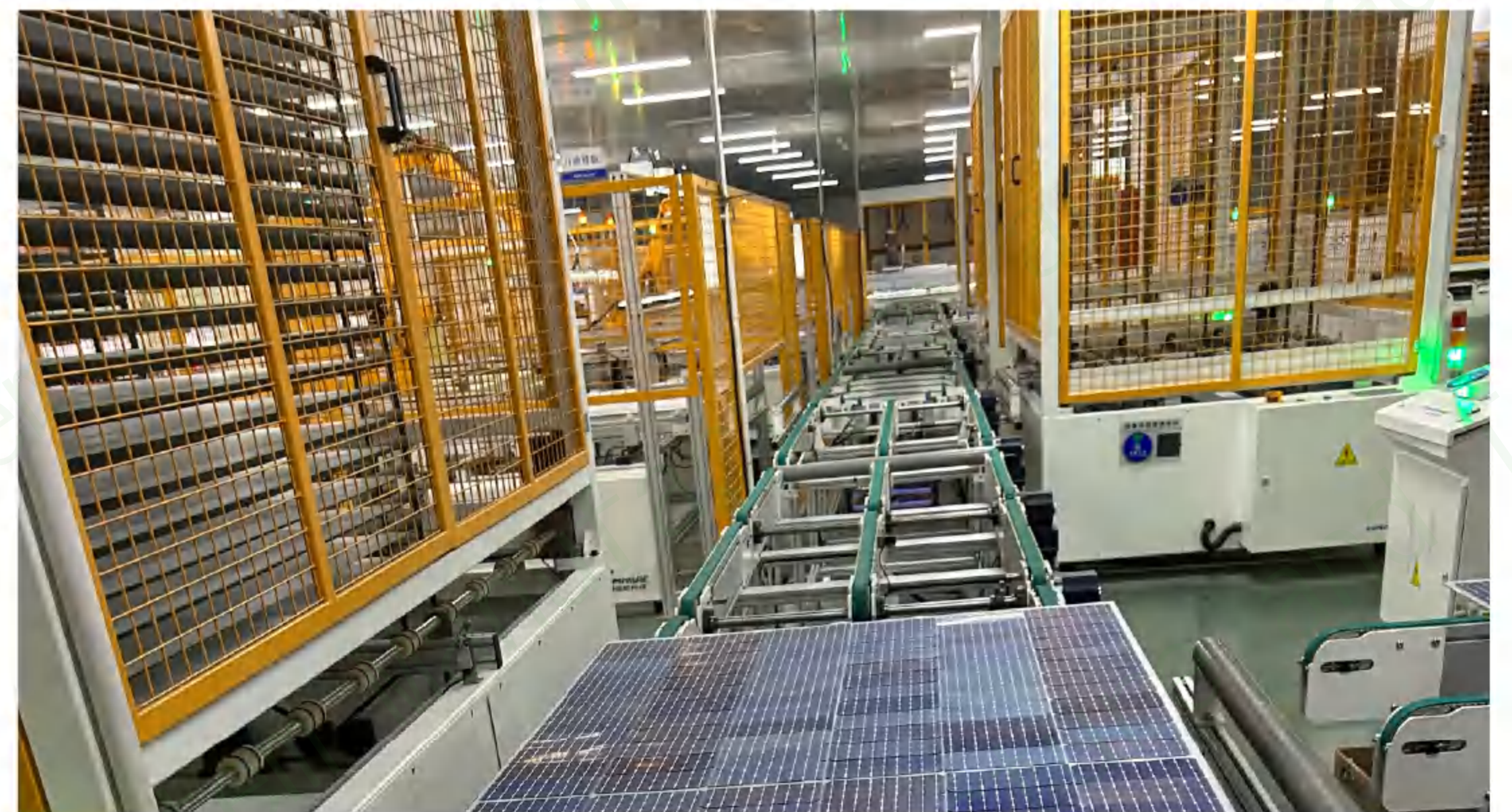
WhatsApp/Tel: +86 1930795 0881

Skype: jennylai20

Email: jenny@jxgreensystem.com

Web: <https://www.pvgreensystem.com>

## OUR PRODUCTION WORKSHOP



## PROFESSIONAL CERTIFICATION



UL



TUV



CE



CQC



ICE



# OUR FLEXIBLE SOLAR PANELS

50W / 100W / 150W / 200W / 220W / 300W / **CUSTOMIZABLE**



Black Panel



White Panel

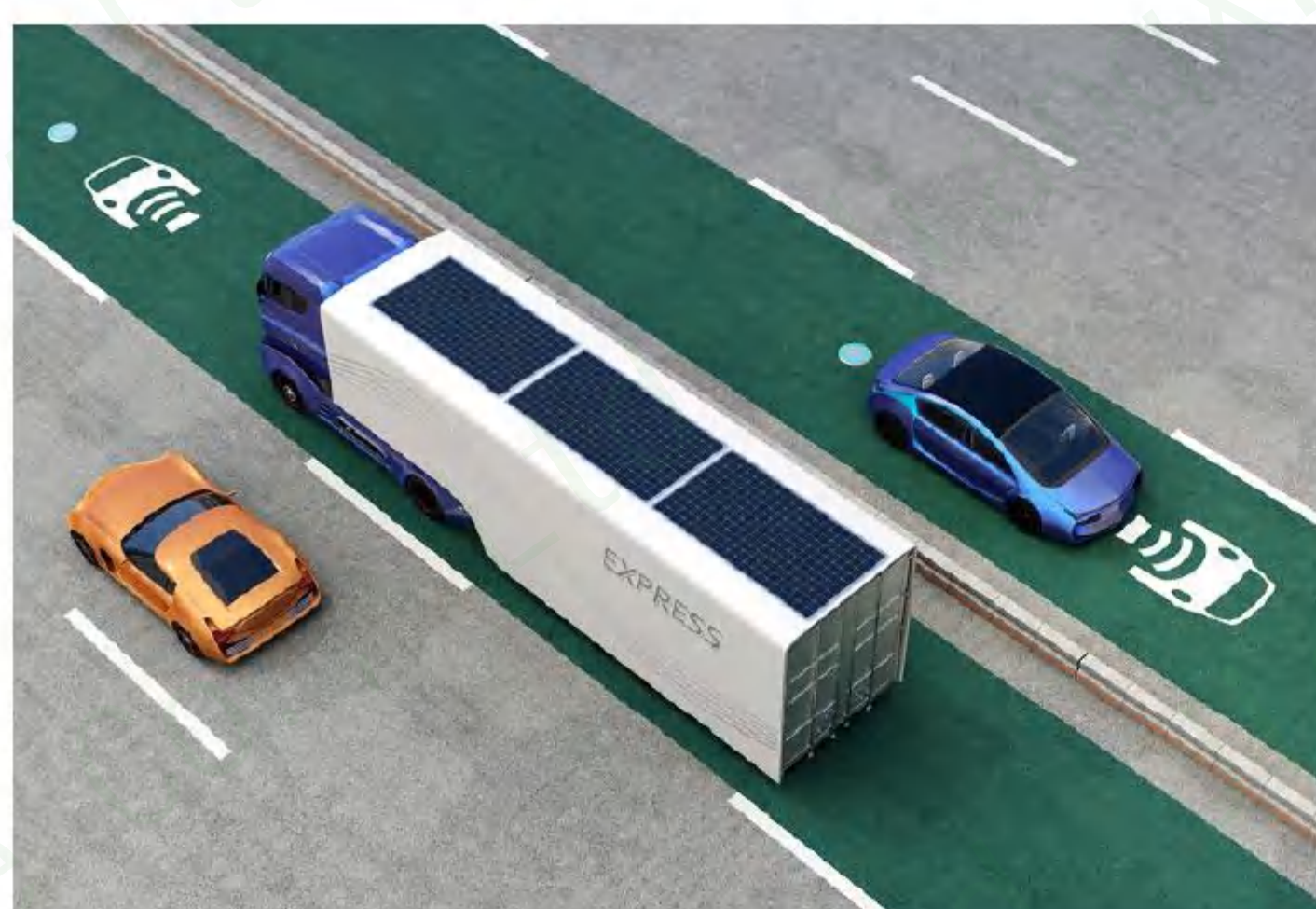
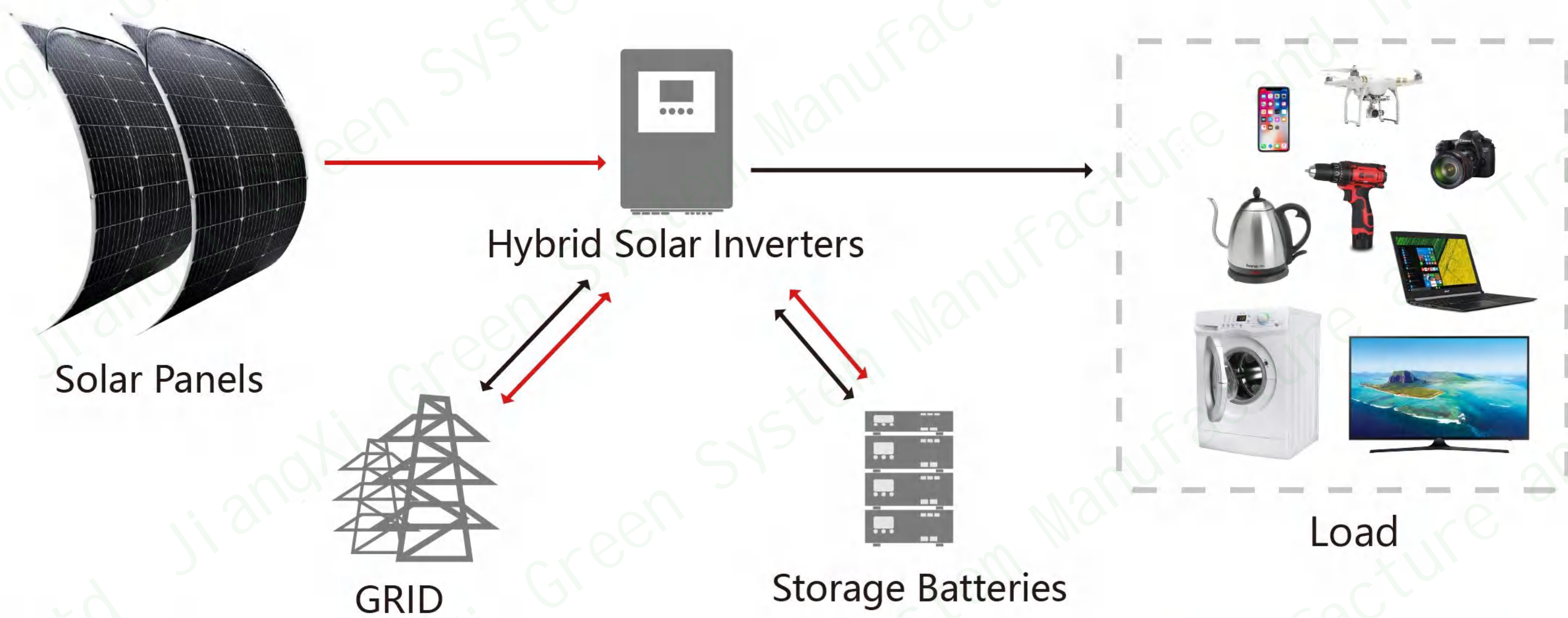
## Product features

- Light and flexible, 45 degree bending protection chip.
- High photoelectric conversion, conversion rate about 22.8%
- It is easy to insert, and the thickness is about 2mm.
- Multiple blocks can be used together.
- Environmental protection and beautiful.
- power saving, and safe and reliable.

Welcome to customize size and wattage!

## SYSTEM APPLICATION DIAGRAM

RV / Truck / Ship / Roof / Wall / Balcony / More



Truck



Ship



Balcony



## 50W Flexible Solar Panel

Technical parameter	
Parameter	SP01-50W
Rated power [Pmax]	50w
Power Error	0-5w
Conversion rate	22.80%
Nominal Voltage	18V
Optimum power [Pmax]	50w
Operating voltage [Vmp]	18±0.1V
Operating current [Imp]	2.7A±0.5A
Short-circuit current [Isc]	3.14A±0.5A
Open circuit voltage [Voc]	21.6V±0.8V
Temperature coefficient voltage	(0.065±0.015)%/°C
Temperature coefficient current	-(160±10)mA/°C
Temperature coefficient power	-(0.5±0.05)%/°C
Maximum system voltage	1000V
Length*Wide*Thickness	540mm*520mm*2mm
Weight	1kg
Cell type	158.75 CHAMFERED SINGLE CRYSTAL CELL
Surface material	ETFE/PET
Exterior color	Black/White single crystal solar flexible panel



# 100W Flexible Solar Panel

Technical parameter	
Parameter	SP01-100W
Rated power [Pmax]	100w
Power Error	0-5w
Conversion rate	22.80%
Nominal Voltage	18V
Optimum power [Pmax]	100w
Operating voltage [Vmp]	18±0.1V
Operating current [Imp]	5.5A±0.5A
Short-circuit current [Isc]	6.04A±0.5A
Open circuit voltage [Voc]	21.6V±0.8V
Temperature coefficient voltage	(0.065±0.015)%/°C
Temperature coefficient current	-(160±10)mA/°C
Temperature coefficient power	-(0.5±0.05)%/°C
Maximum system voltage	1000V
Length*Wide*Thickness	1030mm*520mm*2mm
Weight	1.8kg
Cell type	158.75 CHAMFERED SINGLE CRYSTAL CELL
Surface material	ETFE/PET
Exterior color	Black/White single crystal solar flexible panel



# 150W Flexible Solar Panel

Technical parameter	
Parameter	SP01-150W
Rated power [Pmax]	150w
Power Error	0-5w
Conversion rate	22.80%
Nominal Voltage	18V
Optimum power [Pmax]	150w
Operating voltage [Vmp]	18±0.1V
Operating current [Imp]	8.3A±0.5A
Short-circuit current [Isc]	9.14A±0.5A
Open circuit voltage [Voc]	21.6V±0.8V
Temperature coefficient voltage	(0.065±0.015)%/°C
Temperature coefficient current	-(160±10)mA/°C
Temperature coefficient power	-(0.5±0.05)%/°C
Maximum system voltage	1000V
Length*Wide*Thickness	1130mm*670mm*2mm
Weight	2.7kg
Cell type	158.75 CHAMFERED SINGLE CRYSTAL CELL
Surface material	ETFE/PET
Exterior color	Black/White single crystal solar flexible panel



## 200W Flexible Solar Panel

Technical parameter	
Parameter	SP01-200W
Rated power [Pmax]	200w
Power Error	0-5w
Conversion rate	22.80%
Nominal Voltage	18V
Optimum power [Pmax]	200w
Operating voltage [Vmp]	18±0.1V
Operating current [Imp]	11A ±0.5A
Short-circuit current [Isc]	11.74A±0.5A
Open circuit voltage [Voc]	21.6V±0.8V
Temperature coefficient voltage	(0.065±0.015)%/°C
Temperature coefficient current	-(160±10)mA/°C
Temperature coefficient power	-(0.5±0.05)%/°C
Maximum system voltage	1000V
Length*Wide*Thickness	1400mm*700mm*2mm
Weight	3.6kg
Cell type	161.75 CHAMFERED SINGLE CRYSTAL CELL
Surface material	ETFE/PET
Exterior color	Black/White single crystal solar flexible panel



## 220W Flexible Solar Panel

Technical parameter	
Parameter	SP01-220W
Rated power [Pmax]	220w
Power Error	0-5w
Conversion rate	22.80 %
Nominal Voltage	18V
Optimum power [Pmax]	220w
Operating voltage [Vmp]	18V ±0.1V
Operating current [Imp]	12.22A±0.5A
Short-circuit current [Isc]	12.96A±0.5A
Open circuit voltage [Voc]	21.6V±0.8V
Temperature coefficient voltage	(0.065±0.015)%/°C
Temperature coefficient current	-(160±10)mA/°C
Temperature coefficient power	-(0.5±0.05)%/°C
Maximum system voltage	1000V
Length*Wide*Thickness	1560mm*700mm*2mm
Weight	4kg
Cell type	166 9*4 CHAMFERED SINGLE CRYSTAL CELL
Surface material	ETFE/PET
Exterior color	Black/White single crystal solar flexible panel



## 250W Flexible Solar Panel

Technical parameter	
Parameter	SP01-250W
Rated power [Pmax]	250W
Power Error	0-5w
Conversion rate	22.80 %
Nominal Voltage	21V
Optimum power [Pmax]	250W
Operating voltage [Vmp]	21V ±0.1V
Operating current [Imp]	11.9A±0.5A
Short-circuit current [Isc]	12.69A±0.5A
Open circuit voltage [Voc]	25.2V±0.8V
Temperature coefficient voltage	(0.065±0.015)%/°C
Temperature coefficient current	-(160±10)mA/°C
Temperature coefficient power	-(0.5±0.05)%/°C
Maximum system voltage	1000V
Length*Wide*Thickness	1730mm*700mm*2mm
Weight	4.5kg
Cell type	166 10*4 CHAMFERED SINGLE CRYSTAL CELL
Surface material	ETFE/PET
Exterior color	Black/White single crystal solar flexible panel



## 300W Flexible Solar Panel

Technical parameter	
Parameter	SP01-300W
Rated power [Pmax]	300w
Power Error	0-5w
Conversion rate	22.80 %
Nominal Voltage	18V
Optimum power [Pmax]	300w
Operating voltage [Vmp]	18±0.1V
Operating current [Imp]	16.6A±0.5A
Short-circuit current [Isc]	17.14A±0.5A
Open circuit voltage [Voc]	21.6V±0.8V
Temperature coefficient voltage	(0.065±0.015)%/°C
Temperature coefficient current	-(160±10)mA/°C
Temperature coefficient power	-(0.5±0.05)%/°C
Maximum system voltage	1000V
Length*Wide*Thickness	1520mm*1000mm*2mm
Weight	5.3kg
Cell type	158.75 CHAMFERED SINGLE CRYSTAL CELL
Surface material	ETFE/PET
Exterior color	Black/White single crystal solar flexible panel



## 360W Flexible Solar Panel

Technical parameter	
Parameter	SP01-360W
Rated power [Pmax]	360w
Power Error	0-5w
Conversion rate	22.80 %
Nominal Voltage	36V
Optimum power [Pmax]	360w
Operating voltage [Vmp]	36V±0.1V
Operating current [Imp]	10A±0.5A
Short-circuit current [Isc]	11A±0.5A
Open circuit voltage [Voc]	43.2V±0.8V
Temperature coefficient voltage	(0.065±0.015)%/°C
Temperature coefficient current	-(160±10)mA/°C
Temperature coefficient power	-(0.5±0.05)%/°C
Maximum system voltage	1000V
Length*Wide*Thickness	1830mm*1000mm*2mm
Weight	6kg
Cell type	158.75 CHAMFERED SINGLE CRYSTAL CELL
Surface material	ETFE/PET
Exterior color	Black/White single crystal solar flexible panel



## 400W Flexible Solar Panel

Technical parameter	
Parameter	SP01-400W
Rated power [Pmax]	400w
Power Error	0-5w
Conversion rate	22.80 %
Nominal Voltage	18V
Optimum power [Pmax]	400w
Operating voltage [Vmp]	18±0.1V
Operating current [Imp]	22.2A±0.5A
Short-circuit current [Isc]	22.98A±0.5A
Open circuit voltage [Voc]	21.6V±0.8V
Temperature coefficient voltage	(0.065±0.015)%/°C
Temperature coefficient current	-(160±10)mA/°C
Temperature coefficient power	-(0.5±0.05)%/°C
Maximum system voltage	1000V
Length*Wide*Thickness	2000mm*1000mm*2mm
Weight	6.6kg
Cell type	158.75 CHAMFERED SINGLE CRYSTAL CELL
Surface material	ETFE/PET
Exterior color	Black/White single crystal solar flexible panel



## 430W Flexible Solar Panel

Technical parameter	
Parameter	SP01-430W
Rated power [Pmax]	430w
Power Error	0-5w
Conversion rate	22.80 %
Nominal Voltage	42.0V
Optimum power [Pmax]	430w
Operating voltage [Vmp]	42.0±0.1V
Operating current [Imp]	10.24±0.5A
Short-circuit current [Isc]	10.74A±0.5A
Open circuit voltage [Voc]	49.8V±0.8V
Temperature coefficient voltage	(0.065±0.015)%/°C
Temperature coefficient current	-(160±10)mA/°C
Temperature coefficient power	-(0.5±0.05)%/°C
Maximum system voltage	1000V DC (ICE)
Length*Wide*Thickness	2054mm*1080mm*2mm
Weight	7.2kg
Cell type	144 12*12 CHAMFERED SINGLE CRYSTAL CELL
Surface material	PET
Exterior color	White single crystal solar flexible panel



## 450W Flexible Solar Panel

Technical parameter	
Parameter	SP01-450W
Rated power [Pmax]	450w
Power Error	0-5w
Conversion rate	22.80 %
Nominal Voltage	36V
Optimum power [Pmax]	450w
Operating voltage [Vmp]	36±0.1V
Operating current [Imp]	12.5A±0.5A
Short-circuit current [Isc]	13.54A±0.5A
Open circuit voltage [Voc]	43.2V±0.8V
Temperature coefficient voltage	(0.065±0.015)%/°C
Temperature coefficient current	-(160±10)mA/°C
Temperature coefficient power	-(0.5±0.05)%/°C
Maximum system voltage	1000V
Length*Wide*Thickness	2080mm*1040mm*2mm
Weight	6.8kg
Cell type	166 12*6 CHAMFERED SINGLE CRYSTAL CELL
Surface material	ETFE/PET
Exterior color	Black/White single crystal solar flexible panel



## 520W Flexible Solar Panel

Technical parameter	
Parameter	SP01-520W
Rated power [Pmax]	520w
Power Error	0-5w
Conversion rate	22.80 %
Nominal Voltage	42.3V
Optimum power [Pmax]	520w
Operating voltage [Vmp]	42.3±0.1V
Operating current [Imp]	12.31 ±0.5A
Short-circuit current [Isc]	13.56A±0.5A
Open circuit voltage [Voc]	49.5V±0.8V
Temperature coefficient voltage	(0.065±0.015)%/°C
Temperature coefficient current	-(160±10)mA/°C
Temperature coefficient power	-(0.5±0.05)%/°C
Maximum system voltage	1500V DC (ICE)
Length*Wide*Thickness	2236mm*1180mm*2.8mm
Weight	9.2kg
Cell type	144 12*12 CHAMFERED SINGLE CRYSTAL CELL
Surface material	PET
Exterior color	White single crystal solar flexible panel